



# AROSA 570 G TEX

## BASIC MODEL



DESIGN  
AWARD  
2020



GERMAN  
DESIGN  
AWARD  
SPECIAL  
2021

**BARBECUE Ø** 57 cm

**BURNER** 9.5 kW

**WORKING HEIGHT** 94 cm

**DIMENSIONS** 113/86 × 82 × 111 cm  
**[W × D × H]**

**COLOUR** white

**WEIGHT** 52 kg

- Next-generation GOURMET BURNER TECHNOLOGY (GBT) 80 – 360 °C (continuously adjustable), 2 control dials, all-stainless steel design in SS304 quality
- GAS SAFETY SYSTEM (GSS) Flame Guard, Flame Check, Safety Light integrated in control dial
- Porcelain-enamelled kettle unit, easy cleaning, elegant design
- Lid hinge made from die-cast aluminium
- Side table, right, folding side table. More shelf space to prepare and cook food
- Tool holder for accessories such as barbecue brush, tongs, turner, etc.
- Textile cover, can be customised (black as standard), other colour variants available as separate accessories.
- Large, rubberised wheels
- Legs, individually height-adjustable for any surface

## EXPANSION OPTION / EXTENSION

### PLANCHA AROSA EVO

- Fits perfectly on the BLAZING-/ COOKING ZONE KIT PLUS

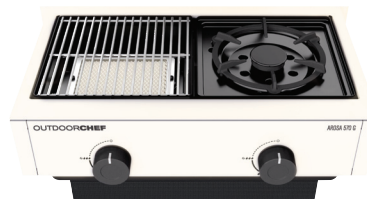


### PLANCHA UNIVERSAL

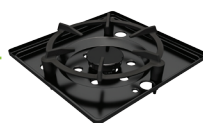
- For Cooking Zone KIT PLUS or BLAZING ZONE® KIT PLUS



## EXTENSION MODULE



### CONSISTING OF



### COOKING ZONE PLUS

- Height-adjustable, 3 x levels
- High heat: searing
- Medium heat: sauté / steaming
- Low heat: sauces and soups

### BLAZING ZONE® PLUS

- High-performance ceramic burner
- 2 temperature zones  
200 – 350 °C  
600 – 900 °C
- Height-adjustable grid, 2 x levels

## Optimal accessories for your barbecue



BARBECUE  
WOK



AROSA  
TEXTILE COVER